

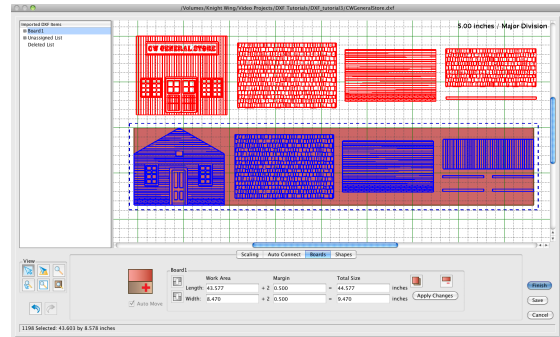
CHAPTER 5 – THE IMPORTERS

There are two additional importer options for Project Designer sold separately as add-on modules. These are the DXF Importer, and the STL Importer. This section will cover the use of both of these. First, lets learn some basics about the files that these importer work with.

DXF IMPORTER

DXF (Drawing eXchange Format) is a vector graphic file format typically used with AutoCAD software. It can, however, be read and exported from most

vector drawing programs, such as Adobe Illustrator and CorelDraw. DXF files contain only vector line/path information, which enables these drawings to be imported into Designer as drawn lines, rather than pattern shapes.



DXF FILE FORMAT

GETTING DXF FILES

DXF files can be generated by most vector drawing software. There are many that can be found online by searching for DXF files or any other vector formats. Vector clip art is readily found online for free and can always be converted to DXF format.

MAKE YOUR OWN DXF FILE

If you are working in another vector drawing program, any vector file format, such as EPS, AI, and CDR files, can be opened in their respective packages and converted by using the export or save as functions.

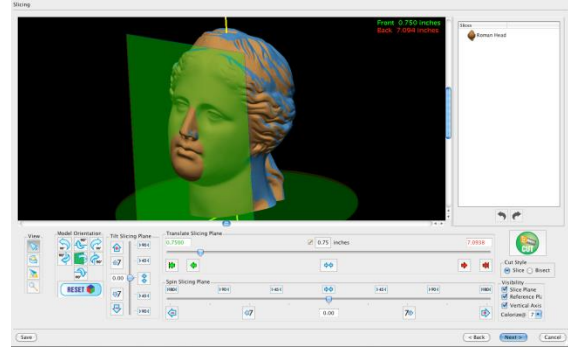
To learn how to use the DXF Importer, it is easiest to watch the tutorial videos available online here: <http://www.carvewright.com/add-on-modules/DXF-importer/>

STL IMPORTER

STL FILE FORMAT

STL (STereolithography) is a 3D file format supported by most 3D software packages. It is the standard file format for 3D printing and other forms of computer aided

manufacturing. Any 3D file can be exported or converted to an STL format.



GETTING STL FILES

STL files can be generated by most 3D design software. There are many that can be found online by searching for 3D models or visiting model sharing sites. 3D files that are not in STL format can be converted using a conversion program.

MAKE YOUR OWN STL FILE

If you are designing your own 3D files, the software you are using should have an export to STL option. If you are finding models online and wish to convert them, there are free conversion programs that can convert from most formats.

To learn how to use the STL Importer, it is easiest to watch the tutorial videos available online here: <http://www.carvewright.com/add-on-modules/STL-importer/>