

# Windows 10 Installation Guide

Many customers have started getting a message on their Windows 10 computers saying that “The files required for this program have been moved or are missing.” This guide will walk you through installing Designer on to a Windows 10 computer and avoid getting this message. This will work with Designer Basic and Designer Pro (Designer 3) but all of the screenshot have been taken installing Designer Pro.

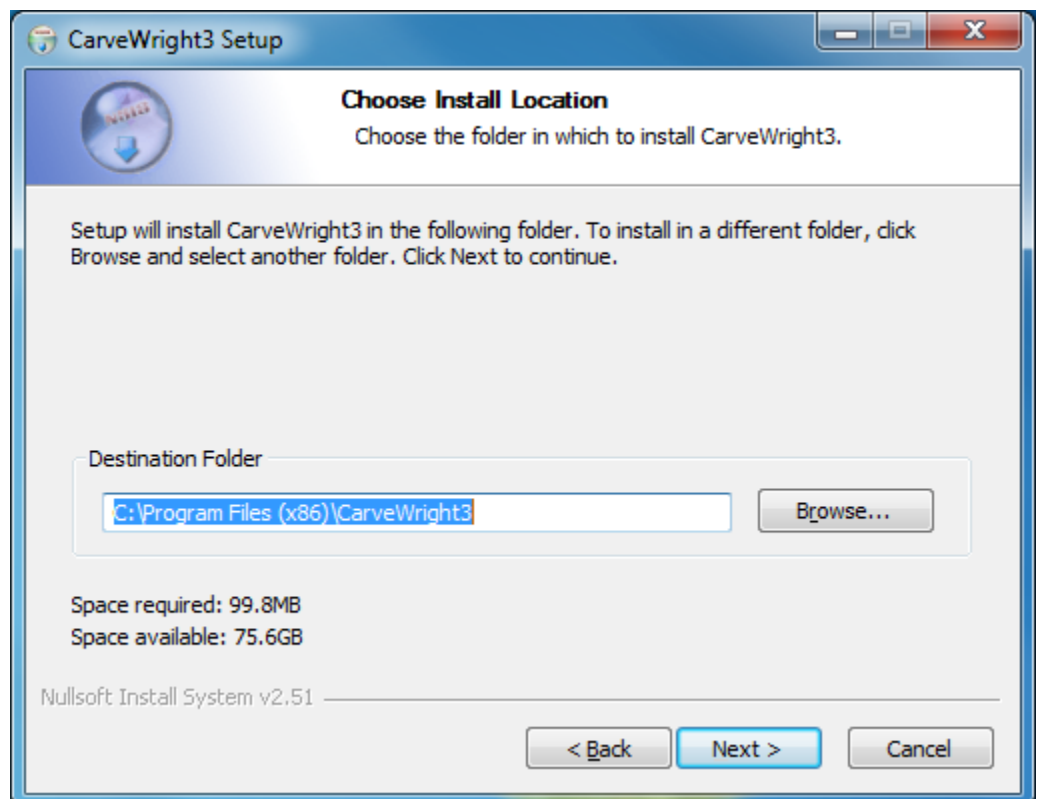
After opening the downloaded file from <http://www.carvewright.com/update/> or <http://www.carvewright.com/update3/> it will open to a screen like this. All you need to do here is click the Next button.



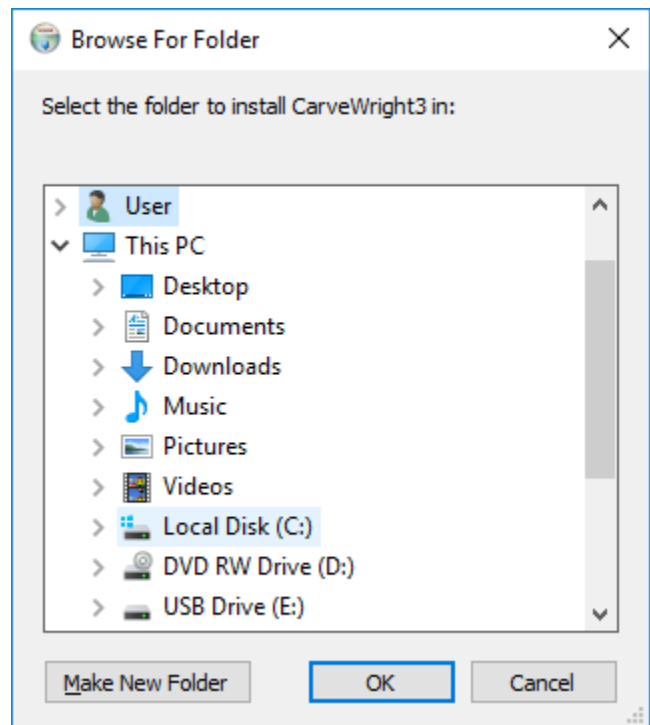
The next screen you will see is our License agreement. Please be sure to read this and the click I Agree.



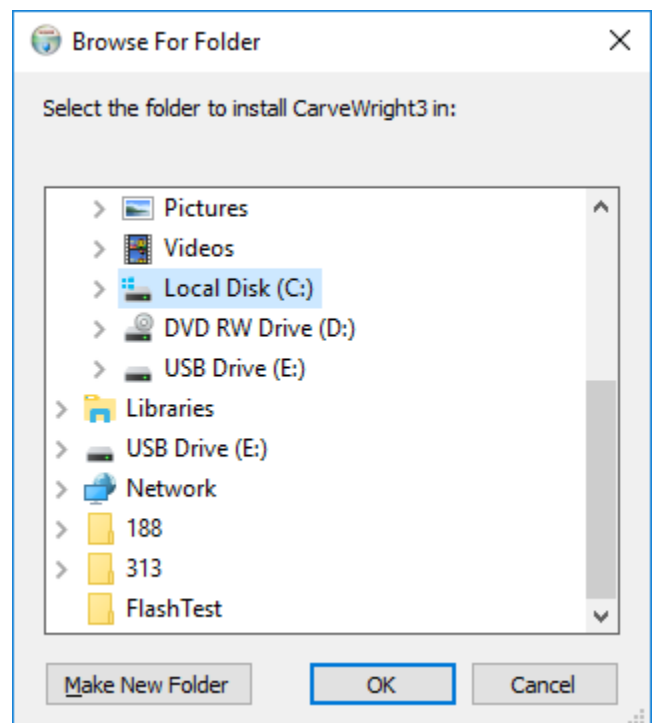
The next screen will have you select the installation location and is where you will need to make a change. Click on the Browse... button.



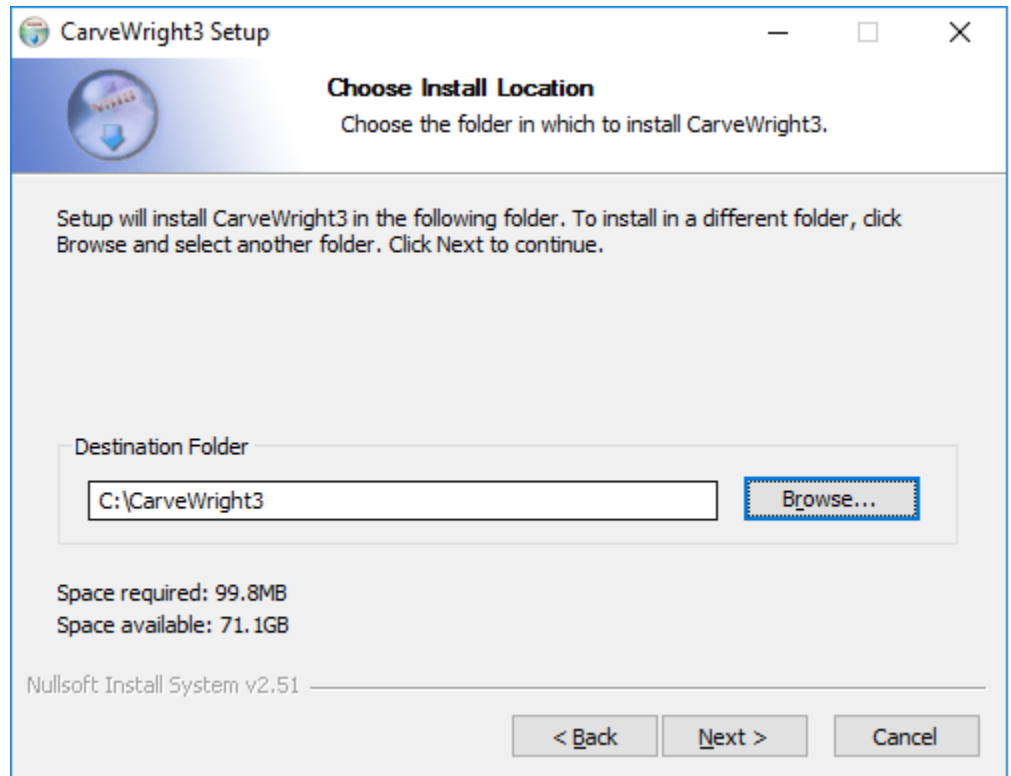
You will load a screen similar to this and need to click the arrow next to the icon named This PC.



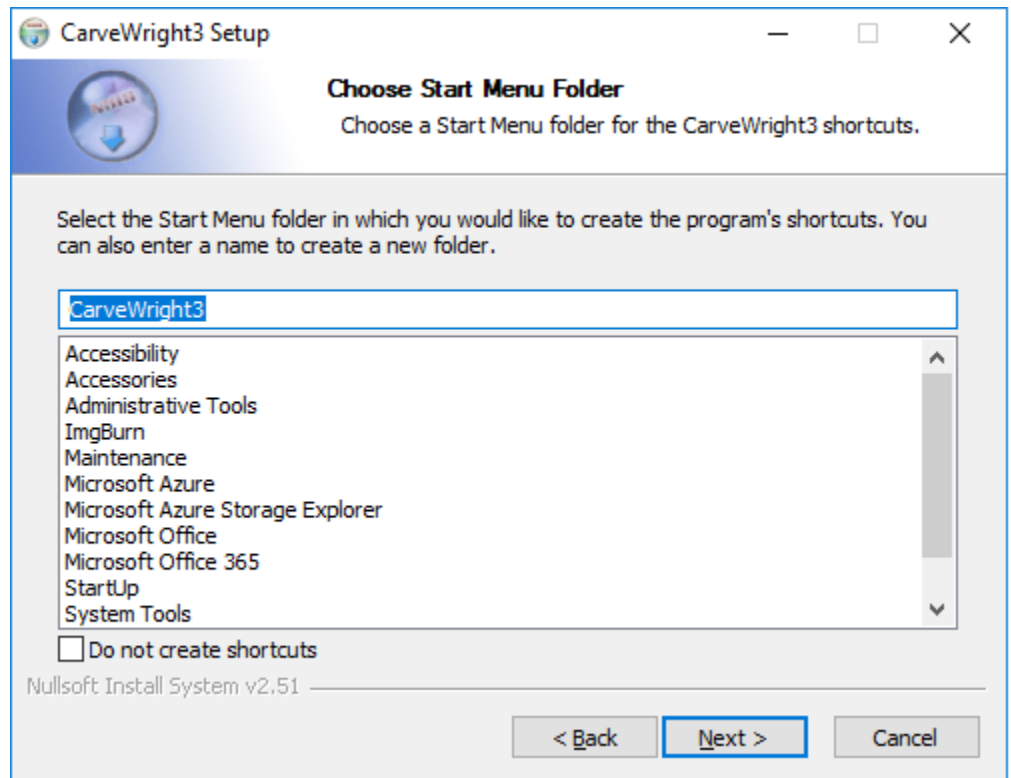
Next you will select the Local Disk (C:) and click the OK button.



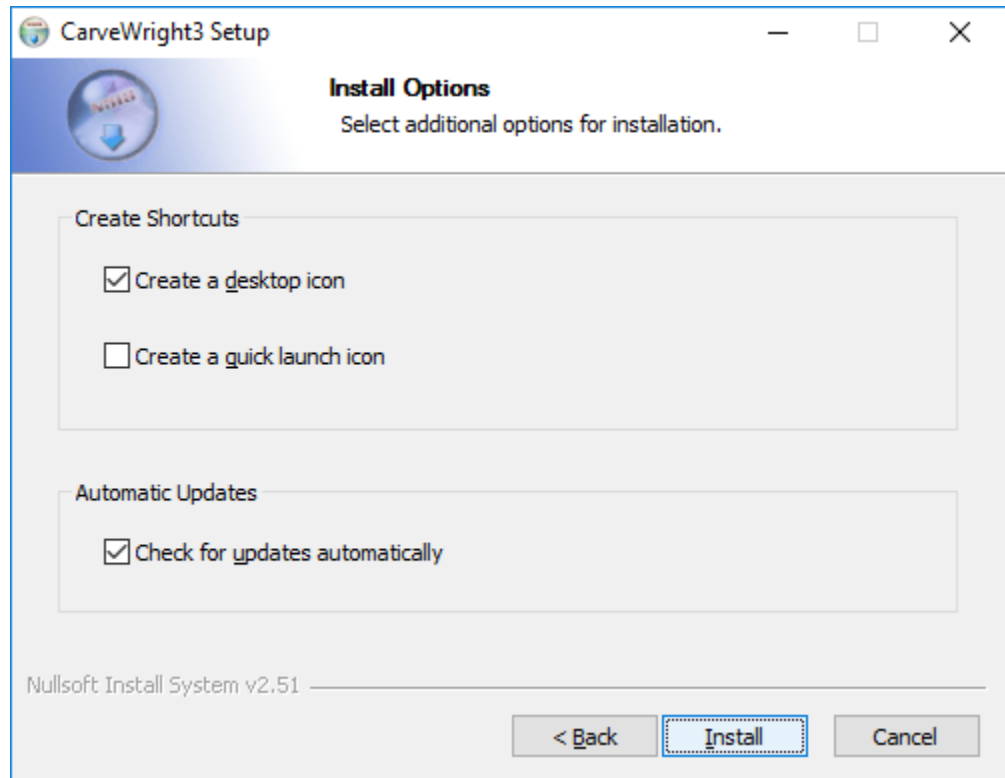
After making the changes you should see a screen that looks like this. (For Designer Basic it will not have the 3 at the end of CarveWright.) After verifying that the Destination Folder is correct select the Next button.



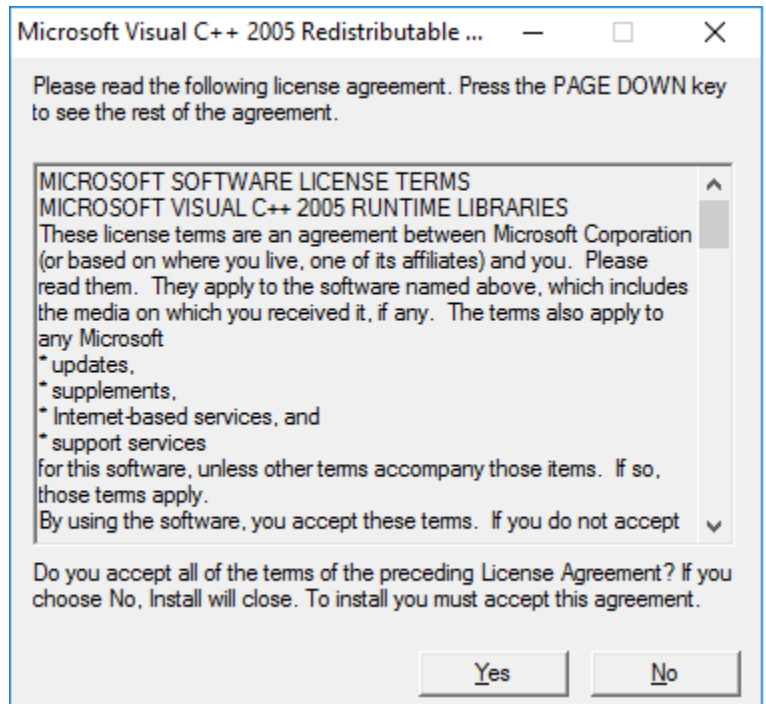
No changes are needed here and you can click the next button.



No changes are need here either click the Install button.



If this is your first time installing the Designer software on this computer then you will select Yes. If you have previously installed the Designer software on this computer then you can select No.



Once the install has completed you will get this screen. Please uncheck the Show Readme box and select Finish. If this is the first time installing on this computer you will need to be sure to right click on the Designer or Designer 3 icon on your desktop and select Run as Administrator. You only need to do this when registering licenses or a new computer.

