

PATTERN SCULPTOR HAS A DIFFERENT LICENSING PROCESS THAN OUR OTHER SOFTWARE. FOLLOW THE STEPS IN THIS DOCUMENT TO LICENSE THE PATTERN SCULPTOR SOFTWARE.

Sculptor must be registered in order to fully utilize the software. If you have not already purchased a license, one can be purchased [HERE](#).

If you received a machine package with a software license sheet, skip to page 2.

If a license was purchased from our online store, proceed below.

You will receive two emails. The first is your invoice receipt and the second contains the information necessary to register your software.

2nd Email Subject: CarveWright: Download keys for order #95752 (This is a sample only.)

It is from this second email that you will get your download keys to register and a link to download the latest version of Sculptor software.

You have received this notification from [CarveWright](#) because you are a registered user or you or some other registered user requested some information for you from our store.

Dear Customer,

You have ordered Electronically distributed products from our site. This message contains URLs from which they can be downloaded.

THE ACTIVATION PROCESS FOR THIS E-PRODUCT IS DIFFERENT FROM USUAL PROCESS FOR LICENSING ADD-ONS.
PLEASE READ LICENSING INSTRUCTIONS THOROUGHLY.

Download E-products:

SKU:	SW-PS-01
Product:	Pattern Sculptor
Item price:	\$199.99
Registration URL:	https://store.carverwright.com/sculptor/index.php?token=2103393_543e7cee38b46
Download URL:	http://www.carverwright.com/download-pattern-sculptor/
Token:	195752_55xx5x555x555

Documentation for installing and activating this items may be found at http://www.carverwright.com/assets/service/Manuals/Pattern_Sculptor_Installation.pdf

Download tokens are valid for 90 days from the date of purchase. Be sure to redeem your tokens promptly!

Please direct all inquiries to sales@carverwright.com or call our number below. Thank you for using our shopping system.

CarveWright
Phone: 713-473-6572
URL: www.carverwright.com

CREATING A REGISTRATION ACCOUNT:

1. Click on the link labeled [REGISTRATION URL](#) from the email or from this document, or go to <https://store.carviewright.com/sculptor/>

2. This will open your internet browser and take you to the Sculptor registration webpage.
3. When clicking the email link, the customer information including the TOKEN # will automatically be filled in with contact information from your store order. (Please edit, if not the same contact information.)
4. Verify the password used from your store account and click the REGISTER button. (Password & verification can be changed here.)
5. Your Registration Account is now created and software license with the Token #.
6. Leave this account open in your internet browser, as you will continue to work between it and the Sculptor software program.

SKU:	SW-PS-01
Product:	Pattern Sculptor
Item price:	\$199.99
Registration URL:	https://store.carviewright.com/sculptor/index.php?token=2103393_543e7cee38b46
Download URL:	http://www.carviewright.com/download-pattern-sculptor/
Token:	195752_55xx5x555x555

Documentation for installing and activating this items may be found at http://www.carviewright.com/assets/service/Manuals/Pattern_Sculptor_Installation.pdf

Download tokens are valid for 90 days from the date of purchase. Be sure to redeem your tokens promptly!

DOWNLOAD & INSTALLATION INSTRUCTIONS:

Sculptor will need to be installed onto your computer, if you have not already installed it in Demo Mode. If you have installed it already, skip to Associate Computer ID.

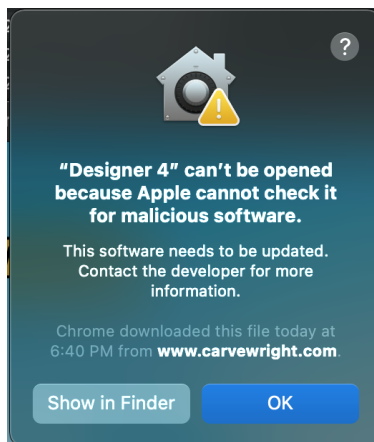
1. Click on the email link labeled DOWNLOAD URL or visit <http://www.carvewright.com/pattern-sculptor/download-pattern-sculptor/> and select which DOWNLOAD INSTALLER is appropriate for your operating system, either MAC or Windows.



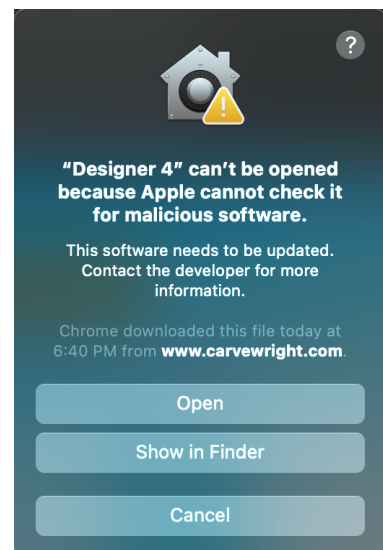
MAC INSTALLATION:

1. Click Download Installer for MAC
2. Download DMG file
3. If it doesn't run automatically, open the DMG file
4. Drag the Sculptor Icon into Application Folder
5. Opening Sculptor for the FIRST TIME ONLY:

5a. In the application folder, find the Sculptor icon and double click on it to open. You will see a message saying Sculptor can't be opened because it can't be checked for malicious software. Click OK.



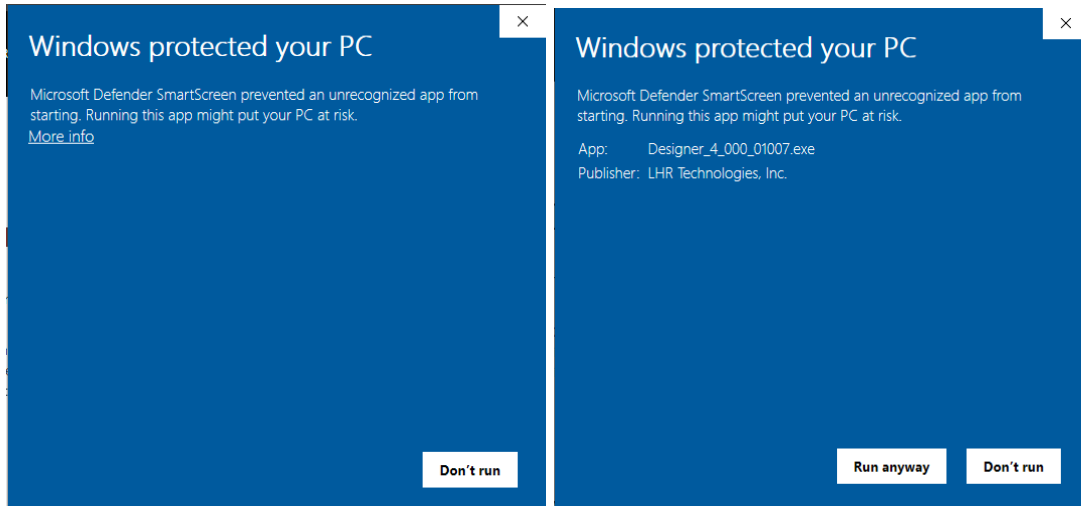
5b. Then right-click on the Sculptor icon and select Open. This time the popup will give you an option to Open the software. Once this is done, it will open without these messages again.



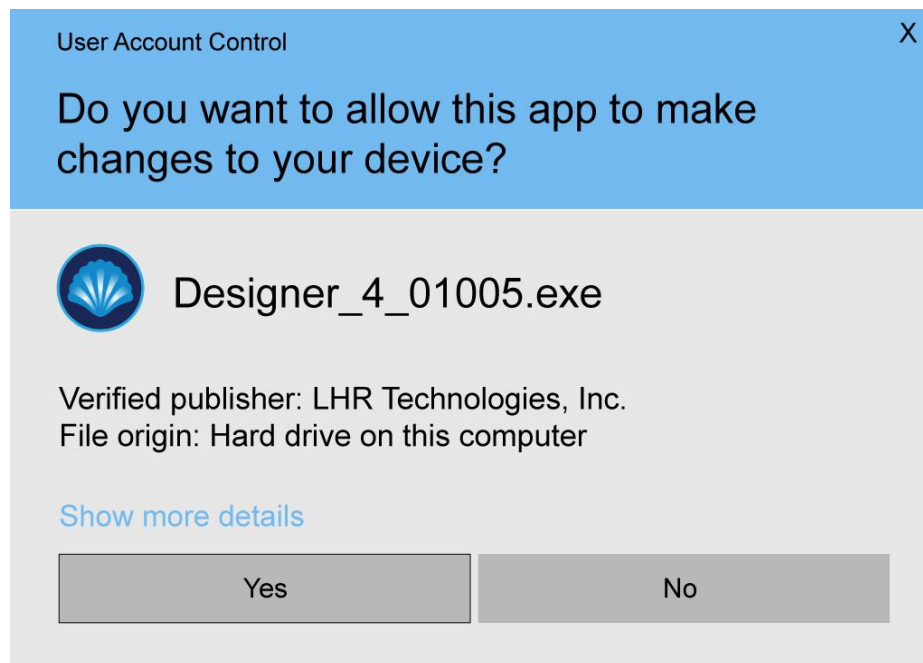
WINDOWS INSTALLATION:



1. Click Download Installer for Windows
2. Windows Defender may try to “protect your PC” If it does, click “More Info” and then “Run Anyway”



3. Next, you may see at screen asking if you want to allow the software to make changes. Click Yes. After that, the installer will run normal.



4. Run the installation wizard
5. Let it default to its suggested location

REGISTRATION OF COMPUTER & LICENSE:

Your installation of Sculptor & computer needs to be associated with your REGISTRATION ACCOUNT.

Each individual computer is recognized by its computer ID. If your computer ID changes in the future (new computer, new hard-drive, updated operating system or virus scan reset of it), we can deactivate your current computer ID for you to reapply the license to your new computer ID.

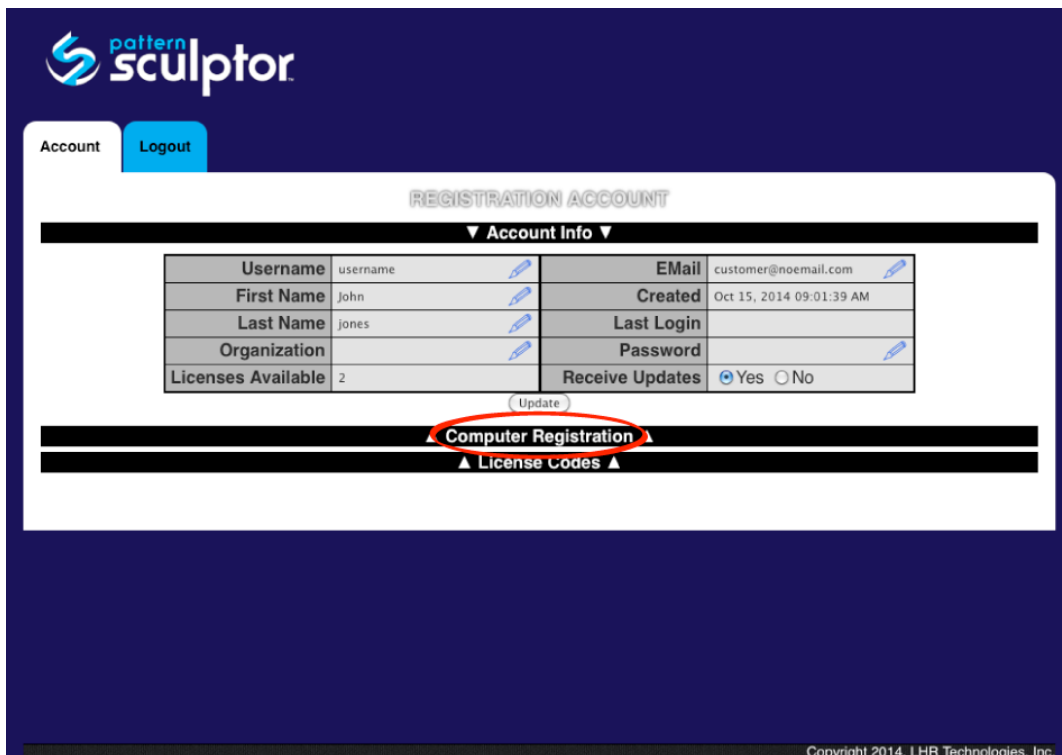
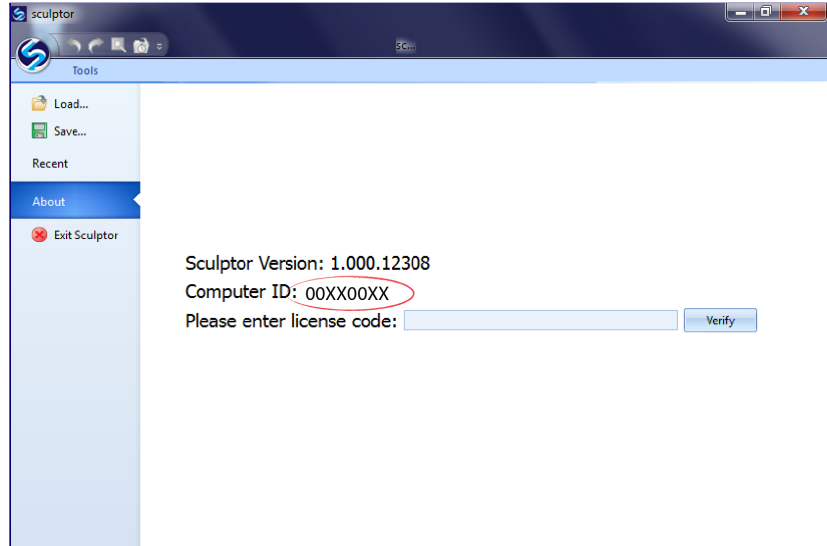
1. Locate the new Sculptor icon on your desktop or Program/Applications Folder.
2. Open Sculptor by clicking on the icon.
3. Once open, click on the Sculptor icon in the top left corner to access the menu options.
4. Click on About. *About displays which version of Pattern Sculptor you have installed and your computer ID.*
5. Highlight and copy your computer ID, so that it can be recorded into the Registration Account.
6. Leave the Sculptor software application open as you will continue to work between it and the online Registration Account.

7. Navigate back to your web browser where your Registration Account is still open.

8. Click on the **COMPUTER REGISTRATION** link toward the bottom on the page.

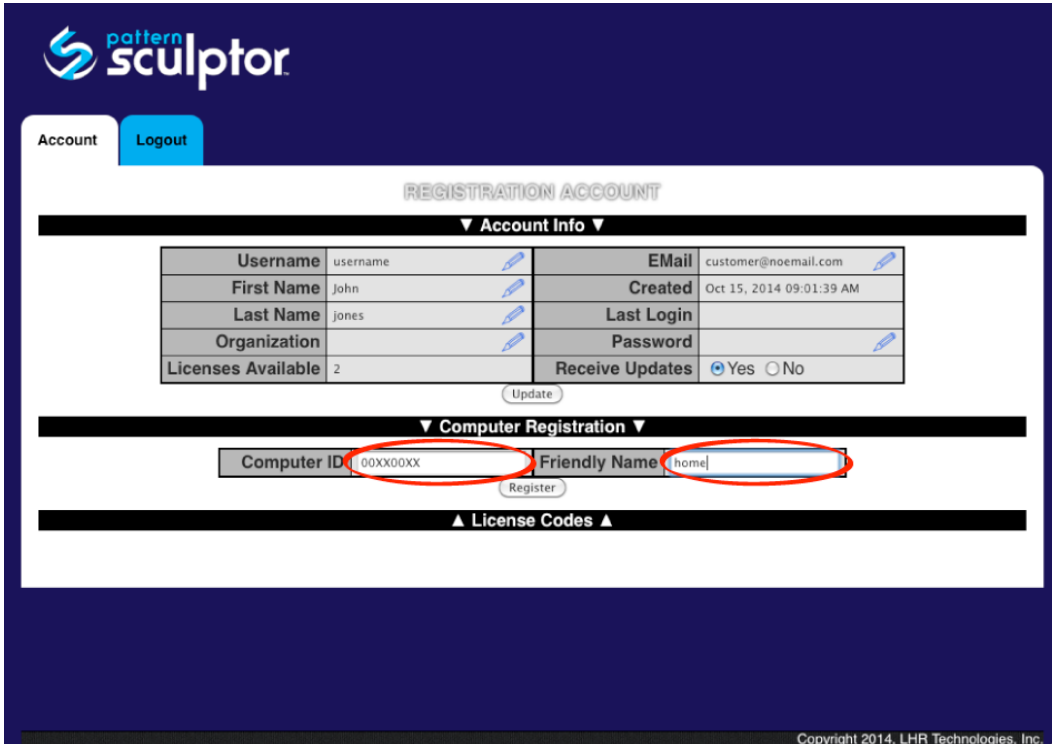
9. Paste the COMPUTER ID into the Computer ID field.

10. Name the computer in the Friendly Name field, so that you can identify it from any other registered computer, such as Dell Laptop, Jan's HP, etc.

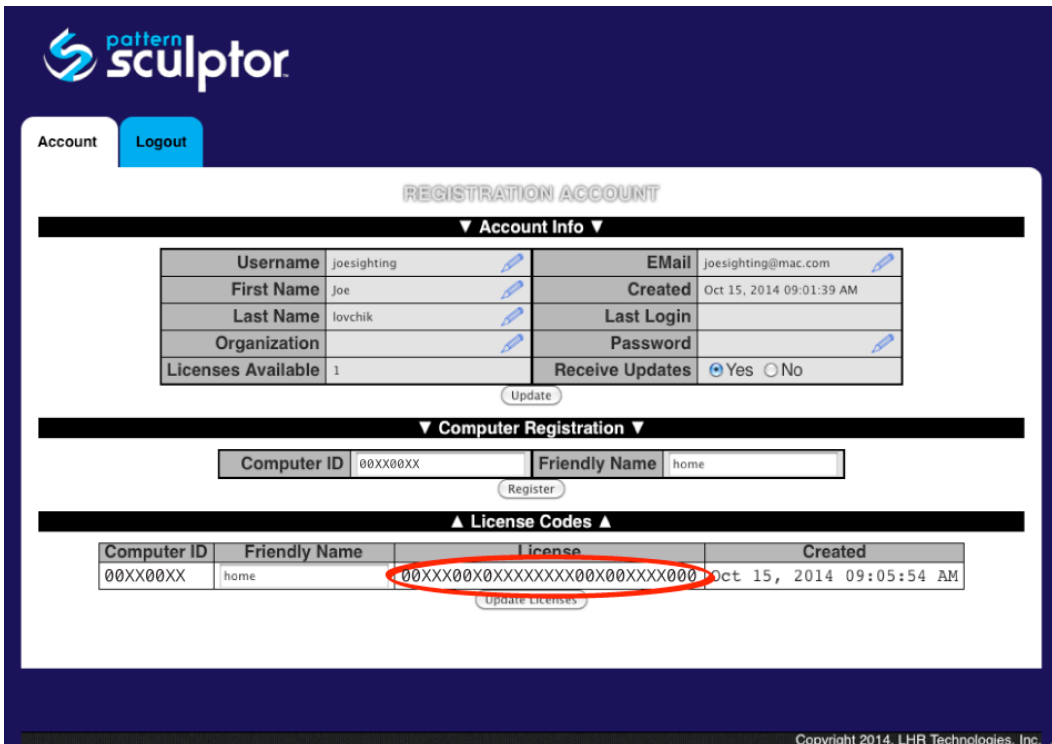


11. Click Register.

- Next, click on **LICENSE KEYS** link at bottom of your Registration Sculptor to retrieve your license code.



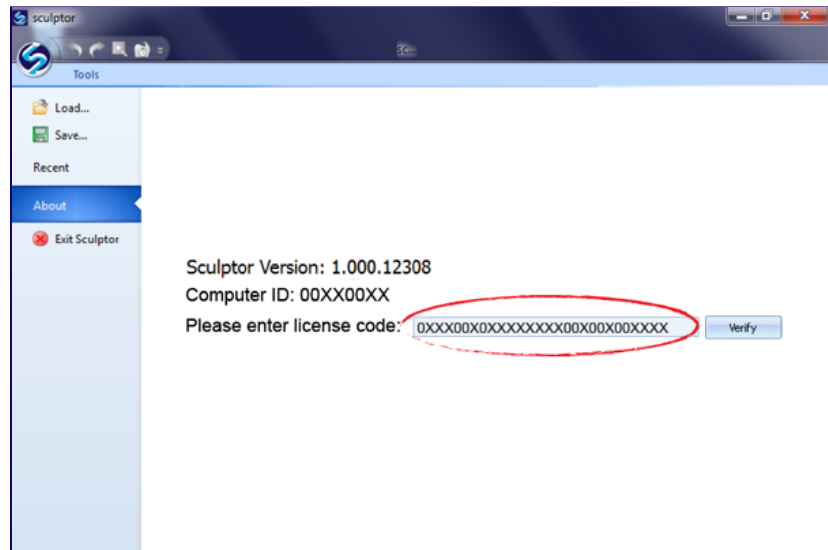
- Copy the License number
- Navigate back to the Sculptor software



15. From the About page,
paste the license code

16. Click Verify

17. Your Sculptor software is
now verified and ready
for full use.



Contact LHR Technologies at 713-473-6572, if you have any questions.